



Russian Federation

SMOLENSK REGION



smolinvest.com

Contents

03



Welcome speech of the Governor of the Smolensk Region

04



Geographical Location

06



Smolensk Region today

07



Transport Accessibility

08



Competitive Edge

09



Federal Development Institutions

10



Regional Support of Small and Medium-Sized Entrepreneurship

11



Smolensk Regional Fund for Entrepreneurship Support

12



State Support for Investment Activity of Large Enterprises

13



State Support for Investment Activity of Small and Medium-Sized Enterprises

14



Logistics Complexes and Terminals

16



Priority Investment Sites

18



PHOENIX State Industrial Park

19



SAFONOVO State Industrial Park

20



STABNA Special Economic Zone

21



Priority Social and Economic Development Area (PSEDA) of Dorogobuzh

22



Main Development Directions

23



Industry

25



Agriculture

26



Agro-Industrial Complex

27



State Support for Agribusiness

28



Education

29



Healthcare

30



Culture

31



Sport

32



Tourism Potential

34



What to Bring from Smolensk

35



Smolensk Region Has Already Been Chosen By





*Dear Friends,
Let me cordially welcome you to our
ancient and heroic Smolensk land.
I would like to invite you to take
a closer look at our region.*

The present guide for investors will be an ideal way to highlight numerous opportunities revealed by the Smolensk Region.

I feel perfectly sure that the up-to-date overview of the regional potential contained in this guide will be of great interest to senior and top management of companies and enterprises, representatives of business community and a wide range of other people willing to know more about the Smolensk Region.

Being considered as the Western gate of Russia, Smolensk has an economically advantageous geographical location which creates prerequisites needed to increase and fulfil the investment potential of the region.

The Smolensk Region is an important transportation and communication hub with the shortest highways and railways running from Central Russia to Europe.

Vast territory and rich mineral resources, significant technological and intellectual potential make the Smolensk Region attractive for investors, Russian and international companies and financial organisations.

The Smolensk Region of today can boast of its most favourable environment created to ensure



the sustainable economic development; extensive efforts are made to improve the investment climate and to ensure safe investments of foreign and domestic capital.

The Administration of the Smolensk Region has worked out a clear investment policy.

We provide real support to the investors who strive to establish strong and mutually beneficial relations with the representatives of the Smolensk Region in various business fields.

Our region is open to cooperation with the partners who pursue serious interests and good intentions. We express our readiness for widening cooperation in industrial, technological, investment and scientific areas.

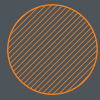
I believe that the Smolensk Region will always be a hospitable home for investors. I sincerely wish all the business community prosperity and success in implementing investment projects within the region.

Governor
of the Smolensk Region


Alexey Ostrovsky

Geographical Location

The Smolensk Region is the most important transportation and communication hub



60 million people live within a 500-km radius of Smolensk



It includes 2 transport corridors

East-West



E30 (M1 "Belarus")



A130 from Moscow to the border with the Republic of Belarus



Main railway line



The Yamal-Europe Gas Pipeline

North-South



R120 from Oryol to the border with the Republic of Belarus



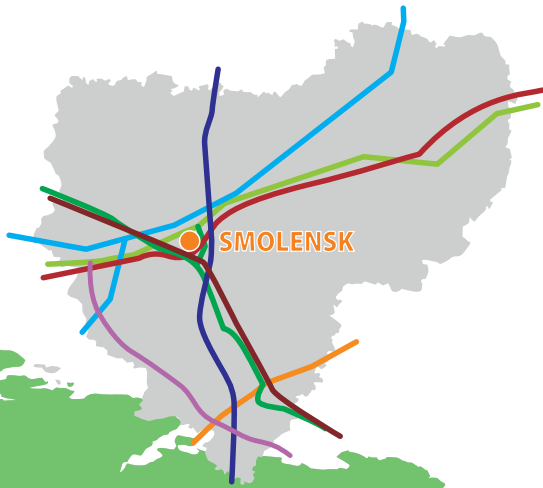
The Baltic Pipeline System (BPS – II)



Main railway line



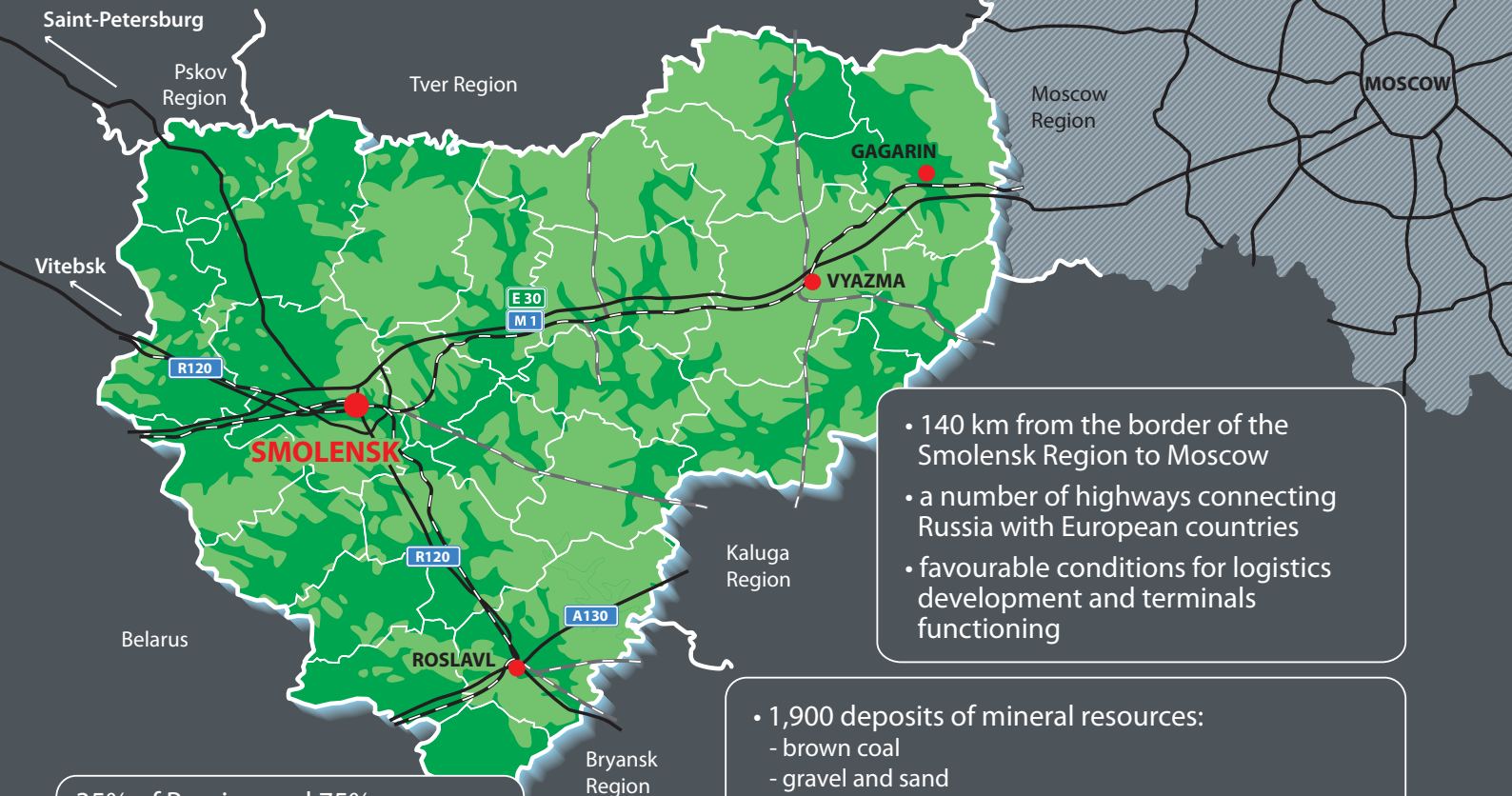
A highway from Shanghai to Hamburg (will be laid through the territory of the Smolensk Region)



FEDERATION



Smolensk Region today



- 140 km from the border of the Smolensk Region to Moscow
- a number of highways connecting Russia with European countries
- favourable conditions for logistics development and terminals functioning

- 1,900 deposits of mineral resources:
 - brown coal
 - gravel and sand
 - coal clay
- 56 deposits of fresh underground waters
- 12 deposits of mineral underground waters

35% of Russian and 75% of international cargo is transported from Western Europe to Russia through the territory of the Smolensk Region



Total area:
50,000 km²



Population:
921,000 people



25
municipal districts



2 urban settlements



10,700 km of motorways



1,259 km of public railways



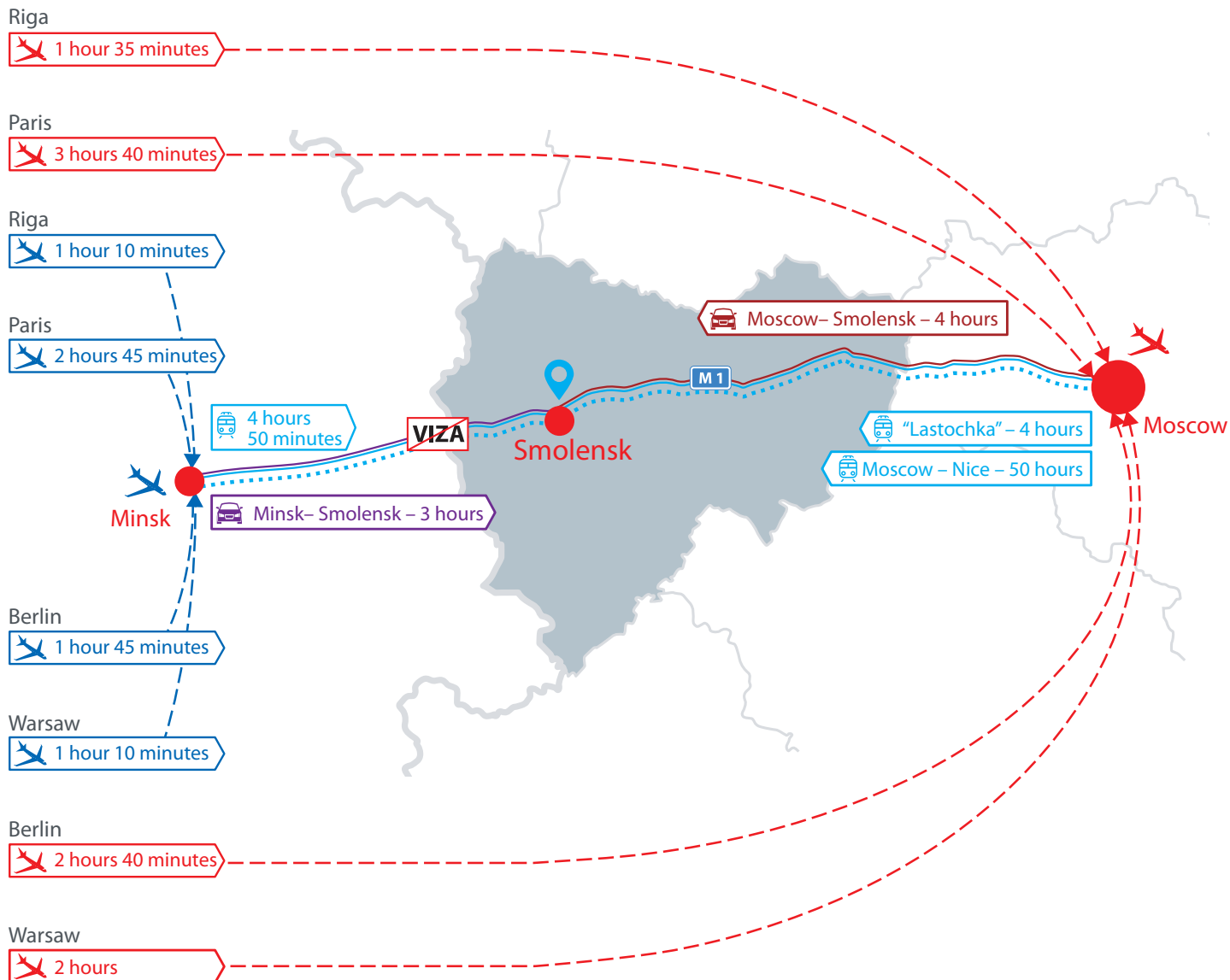
The main transportation hubs are: Smolensk, Vyazma, Roslavl

Transport Accessibility

DISTANCE BETWEEN THE CITIES
ON M1 "BELARUS" HIGHWAY

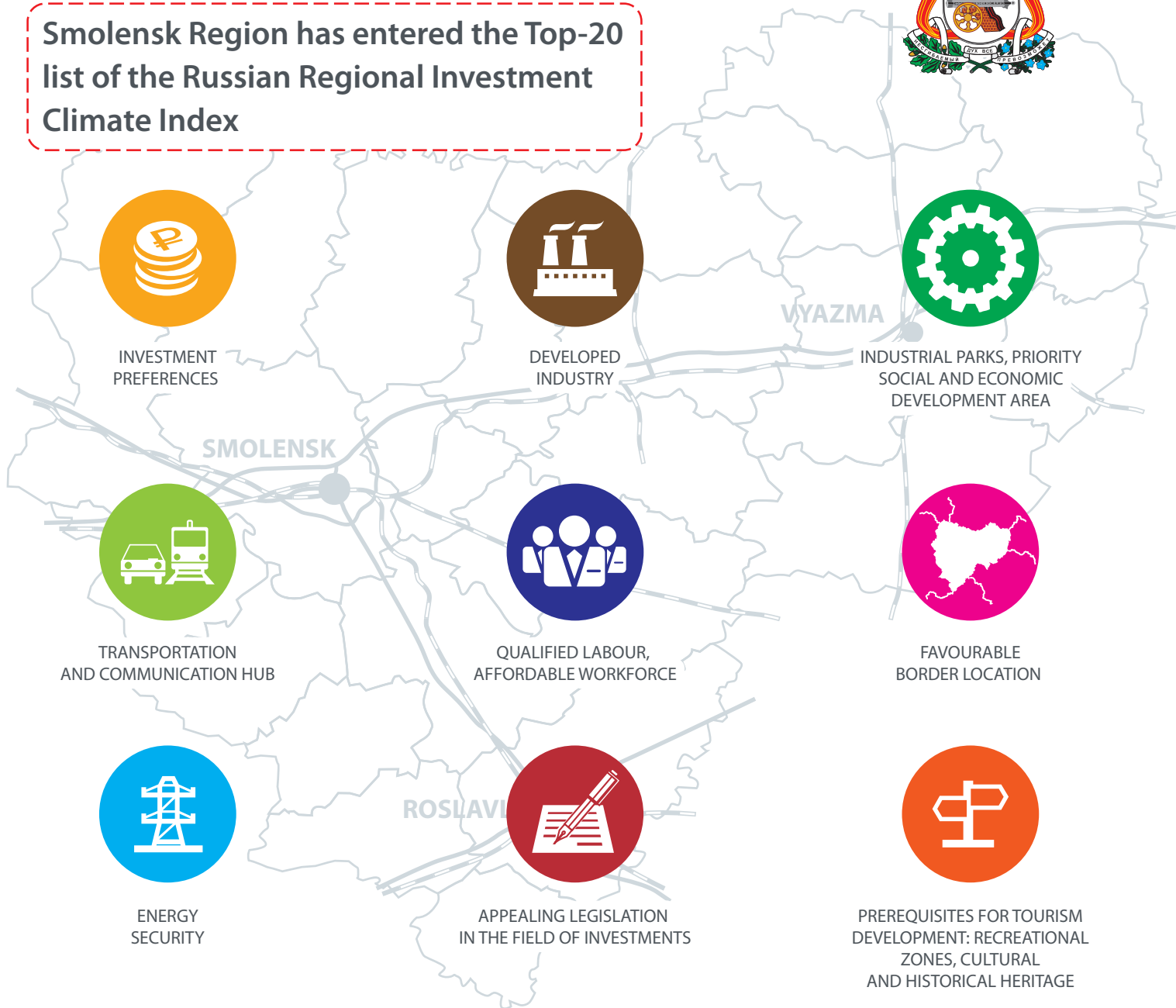
SMOLENSK – MINSK – 348 km

SMOLENSK – MOSCOW – 380 km



Competitive Edge

Smolensk Region has entered the Top-20 list of the Russian Regional Investment Climate Index



Federal Development Institutions



The Fund stimulates modernization of Russian industry, encourages new production facilities to appear and ensures import substitution. The Fund offers easy terms of cofunding the projects aimed at developing new high-tech products, technical retrofitting and establishing competitive production facilities based on the best available technologies, offering special-purpose loans with the annual interest of 1% and 3% granted for up to 7 years in the amount ranging from 5 to 2,000 mln. roubles.



The Corporation is liable for rendering financial, information, marketing, property and legal support to small and medium-sized business entities and companies creating infrastructure to provide this support.



The Fund implements programmes of innovative development, aimed to establish new high-tech companies and encourage development of the existing ones, as well as to increase their profits resulting from scientific and technological activities; it also attracts investments of small innovative enterprises and creates new job opportunities.



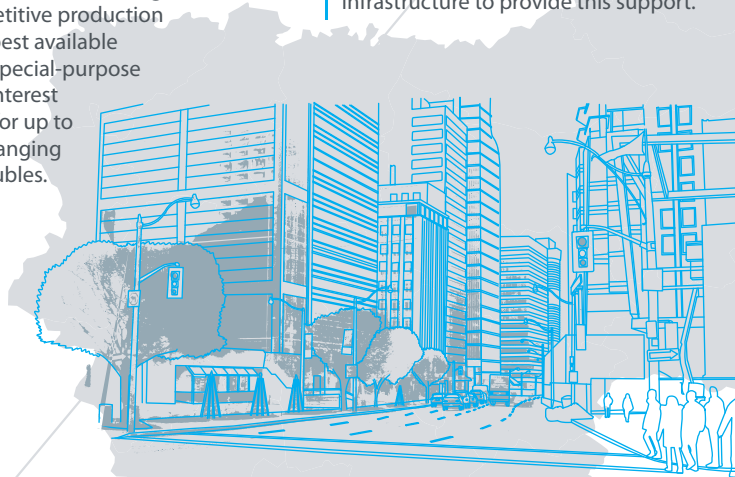
VEB.RF deals with implementation of a new approach to search and selection of investment projects. In partnership with commercial banks, VEB.RF provides financing for large-scale projects to develop the country's infrastructure, industrial production and social sphere, strengthens its technological potential and improve quality of life.



Russian Export Center JSC (REC) is a state-owned development institute established by the Government to support the development of the non-commodity exports industry. REC offers a wide range of financial and non-financial support tools to benefit the Russian exporters explore the foreign markets and build capacity in the global trade.



The Tourism.RF Corporation works together with Russian's regions to create local tourism clusters and invest in building tourist infrastructure on a public-private partnership basis. The Corporation cooperate with private investors, developers and government agencies of all levels as the guarantor of sustainable development of the industry. It ensures transparency and efficiency of public investment in tourism and creates high-quality tourist infrastructure using high-tech solutions.



Regional Support of Small and Medium-Sized Entrepreneurship



SMOLENSK REGIONAL FUND FOR ENTREPRENEURSHIP SUPPORT

sofmp.ru

The Fund performs microfinancing. It also provides guarantees for small and medium-sized enterprises, supports their development and assist in obtaining preferential leasing support.



Center of Agricultural Consulting Services of the Smolensk Region

csk-smolensk.ru

Providing the complex of information and consulting services for people carrying out agricultural activity or planning to do so.
State support.
Business planning.
Assistance in sales organization.



Regional Industry Development Fund

It provides joint financing together with the Federal Industrial Development Fund from 20 to 100 million rubles for a period of up to 5 years. Interest rate from 1% per annum. Co-financing on the part of the borrower at least 15% of the loan amount. Financing of companies implementing projects and/or carrying out activities in the field of industry in the territory of the Smolensk Region for investment and current goals for up to 5 years.



INVESTMENT DEVELOPMENT CORPORATION OF THE SMOLENSK REGION

corp.smolinvest.com

The Corporation serves to increase investment appeal of the Smolensk Region, attract investments and launch investment projects within the region, as well as create investment sites for the investors and manage investments and borrowed capital.



INVESTMENT PORTAL OF THE SMOLENSK REGION

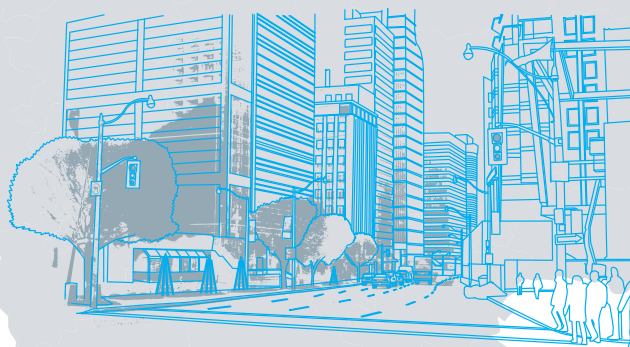
smolinvest.com



"My Business" Center (Entrepreneur's support center of the Smolensk Region)

cpp67.ru

The Center offers free information, educating and consulting services, licensing and patenting procedures, legal support, business planning, recruitment, certification of goods, works and services to small and medium-sized entrepreneurs of the Smolensk Region, as well as to potential entrepreneurs and self-employed people.



EXPORT SUPPORT CENTER OF SMOLENSK REGION

export67.com

Involvement of small and medium enterprises of the Smolensk Region in export activities, stimulation of existing exporters. Facilitating the entry of Smolensk exporters into foreign markets of goods, services and technologies. Improving the competitiveness and efficiency of export-oriented enterprises in the Smolensk Region. Regional Center of Competence in the field of labor productivity.
The main aim of the Center is increase in labor productivity, process optimization and implementation of lean manufacturing tools.



Regional Center of Competence in the field of labor productivity

The main aim of the Center is increase in labor productivity, process optimization and implementation of lean manufacturing tools.

Micro-credit company



Smolensk,
Engels St. 23



+7 (4812) 777-077



sofpmp@yandex.ru



sofpmp.ru

Guarantee fund:

Guarantees up to 25 mln roubles for bank loans, leasing companies and other financial organizations.

- the commission for guarantee provision is from 0,75% to 1,25% per annum;
- it covers up to 50% of the loan or the letter of credit;
- decisions are made within 5 business days.

Microfinance:

Financial support of small and medium sized enterprises in the Smolensk Region.

Microloans for small and medium sized enterprises:

- Microloan amount – up to 3 000 000 roubles**
- Microloan term – up to 36 months**
- Rate – from 1% per annum**

For physical persons – self-employed persons:

- Microloan amount – up to 200 000 roubles
- Microloan term – up to 36 months
- Rate – from 1/2 of the key interest rate defined by the Central Bank of Russia

Preferential Equipment Leasing***

- Funding amount – from 5 to 200 mln roubles
- Term – up to 5 years
- Advance payment – from 15%



* Registration number of the entry in the state register of microfinance organizations No. 6110167000500 dated 25.10.2011.

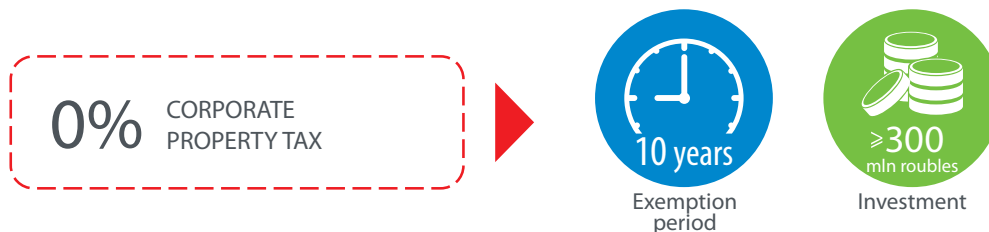
** Depending on the kind of economic activity.

*** Microcredit company Smolensk Regional Fund for Entrepreneurship Support provides informational interaction with regional leasing companies of Corporation of Small and Medium Enterprises JSC.

State Support for Investment Activity of Large Enterprises



TAX EXEMPTIONS FOR INVESTORS



- **Investment tax deduction for corporate income tax**
Reducing the amount of corporate income tax credited to the budget of the constituent entity of the Russian Federation, on part of the amount of expenditure associated with the acquisition, modernization or reconstruction of fixed assets.
- **Reimbursement of costs for the creation of engineering infrastructure facilities necessary for the implementation of the investment project**
(RF Government Decree No.1704 of 9 October 2020)
- **Large-Scale Investment Project**
State- or municipal-owned land plots may be provided to entrepreneurs for their use under lease without competitive bidding.

OTHER KINDS OF SUPPORT:



Investment project management



Project design and business counselling



Information and administrative support

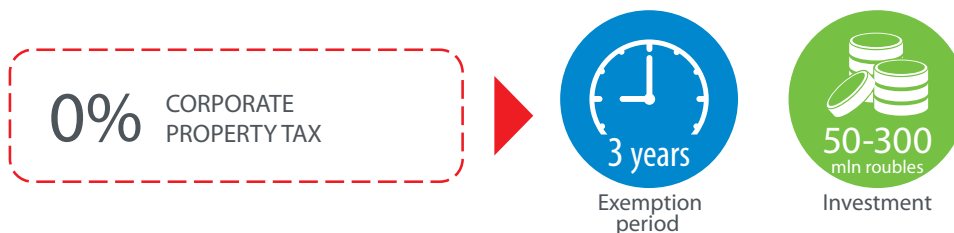


Recruitment

State Support for Investment Activity of Small and Medium-Sized Enterprises



TAX EXEMPTIONS FOR INVESTORS



SUBSIDIES



OTHER KINDS OF SUPPORT:



Investment project management



Project design and business counselling



Information and administrative support

* Included in the Unified State Register of small and medium-sized businesses – rmsp.nalog.ru

Logistics Complexes and Terminals



SMOLENSKY CLT TRANSIT-C LLC

- LOCATION:** 214032, Smolensk, Lavochkin St. 105.
- total area – 37,000 m²
 - capacity – 350 cargo vehicles per day



ELTRANS+ LLC WAREHOUSE FOR TEMPORARY STORAGE

- LOCATION:** 215805, Smolensk Region, Yartsevo, Vtoraya Mashinostroitel'naya St. 5/3.
- total area – 28,400 m²
 - capacity – 200 cargo vehicles per day



VYAZEMSKY TERMINAL LLC WAREHOUSE FOR TEMPORARY STORAGE

- LOCATION:** 215119, Smolensk Region, Vyazma, Elevator'naya St. 12.
- total area – 20,000 m²
 - capacity – 50 cargo vehicles per day



ROSLAVLSKY CLT ROSLAVL-TERMINAL LLC

- LOCATION:** 216500, Smolensk Region, Roslavl District, Roslavl, Karl Marks St. 166.
- total area – 25,000 m²
 - capacity – 140 cargo vehicles per day



NIKOLSKY TERMINAL LLC WAREHOUSE FOR TEMPORARY STORAGE

- LOCATION:** Smolensk Region, Smolensk District, Korokhotkinskoye rural settlement, Nikolskoe Village, Dorozhnaya St. 3.
- total area – 40,000m²
 - capacity – 200 cargo vehicles per day



STABNINSKY CLT ALFA TRANS TERMINAL LLC

- LOCATION:** Smolensk Region, Smolensk District, Stabenskoye rural settlement, northeast of Stabna Village, at a distance of 700 meters; Smolensk Region, Smolensk District, Stabenskoye rural settlement, to the right of the highway Stabna-Mazaltsevo, northeast of Stabna Village, at a distance of 500 meters.
- total open and surrounding area – 102,410.49 m²
 - capacity - 1,000 cargo vehicles per day
 - Terminal of excise duty
 - Overall competence customs terminal
 - One of the largest terminals in Russia
 - Participant of the following projects: Simplified Customs Corridor Russia Italy
- alfa-trans.ru



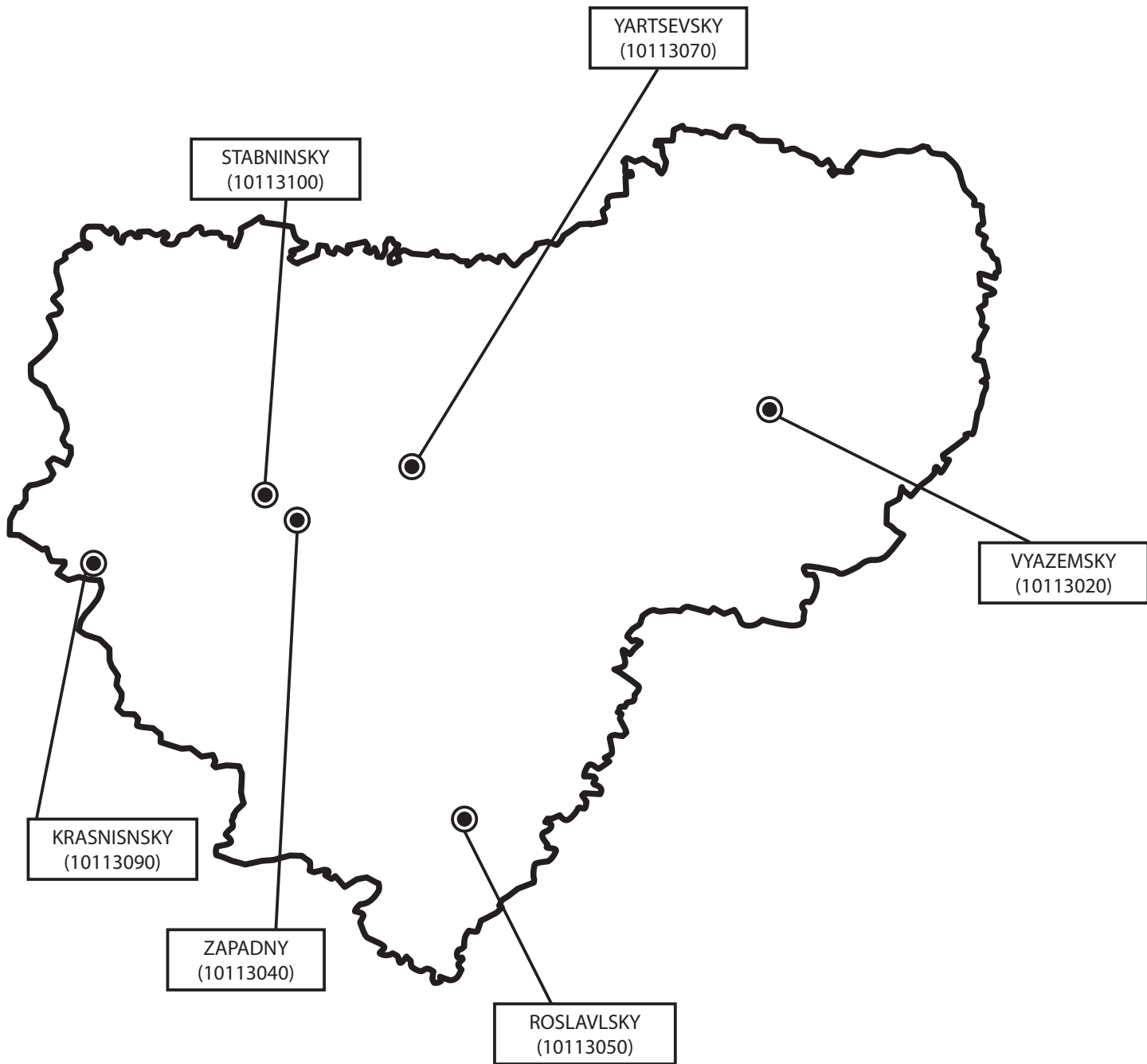
KRASNOY CLT ALFA-TRANS LLC

- LOCATION:** Smolensk Region, Krasninsky District, 250 m west of Buda Village and 650 m north of the railway Moscow - Minsk.
- total open and surrounding area – 34,753.90 m²
 - capacity – 49 cargo vehicles per day
 - 2 km from the Belarus border
- alfa-trans.ru



KRASNINSKY TCLT RHENUS-TERMINAL LLC

- LOCATION:** Smolensk Region, Krasny District, Krasnovskoye rural settlement, Krasnaya Gorka Village, Zarechnaya St., Bld. 2.
- total open and surrounding area – 39,916 m²
 - capacity – 109 cargo vehicles per day
 - 3 km from the Belarus border
 - The first warehouse built by the international carrier in the Smolensk Region
- ru.rhenus.com



Logistics Complexes and Terminals



MOSCOW

TVER REGION

PSKOV REGION

SAINT-PETERSBURG

VYAZMA

E 30
M 1

STABNA

YARTSEVO

RUDNYA

R120

KATYN

SMOLENSK

TIKHVINKA

KRASNAYA GORKA

R120

KALUGA REGION

DESNOGORSK

BELARUS

ROSLAVL

A130

BRYANSK REGION



TEMPORARY STORAGE WAREHOUSE



CUSTOMS AND LOGISTICS TERMINAL

EUROPE

Priority Investment Sites

--- Agricultural lands

* Sites with favourable opportunities of technological connection to power grid facilities from 15 to 50 MVA

- 1 **Zamoshchye**
Investment Site
Site area – 60 ha
- 2 **Koshchinskaya**
Investment Site
Site area – 47 ha
- 3 **Kovalyovka**
Investment Site
Site area – 135 ha
- 4 **Kamenka**
Investment Site
Site area – 30 ha
- 5 **Shokino**
Investment Site
Site area – 310 ha
- 6 **Demidov**
Investment Site
Site area – 3,340 ha
- 7 **Prechistoe**
Investment Site
Site area – 9,228 ha

--- Industrial lands

- 8 **VNPO Resurs***
Investment Site
Site area – 52.5 ha
- 9 **Stalkon***
Industrial Zone
Site area – 7.5 ha
- 10 **Golyнки***
Investment Site
Site area – 59 ha
- 11 **RAAZ***
Investment Site
Site area – 89.5 ha
- 12 **Roslavl'skaya***
Investment Site
Site area – 110 ha
- 13 **Kardymovo**
Investment Site
Site area – 99 ha
- 14 **Smolensk-Lavochkina**
Investment Site
Site area – 26 ha
- 15 **Dorogobuzh**
Investment Site
Site area – 39 ha
- 16 **Belkino***
Investment Site
Site area – 382 ha

Priority Investment Sites



Reserve land fund for agricultural usage of more than 720 thousand ha

- Including:
- Dukhovshchina District – 44 ths. ha
 - Elnya District – 42 ths. ha
 - Krasny District – 36 ths. ha
 - Monastyrshchina District – 54 ths. ha
 - Pochinok District – 35 ths. ha
 - Roslavl District – 53 ths. ha
 - Rudnya District – 70 ths. ha
 - Safonovo District – 36 ths. ha
 - Smolensk District – 37 ths. ha
 - Sychyovka District – 30 ths. ha
 - Kholm-Zhirkovsky District – 32 ths. ha
 - Shumyachi District – 30 ths. ha



PHOENIX

State Industrial Park

Northern part of Smolensk,
Smolensk Region

indpark-fenix.ru

- highly qualified specialists
- complex engineering infrastructure
- free technical connection to an electric grid of high voltage
- free using of land during construction

Specialization

Modern production facilities
(4-5th hazard class):

- metal processing
- machine manufacturing
- production of metal and plastic goods
- consumer goods industry
- food industry
- wooden art
- logistic equipment for greenhouses
- other productions

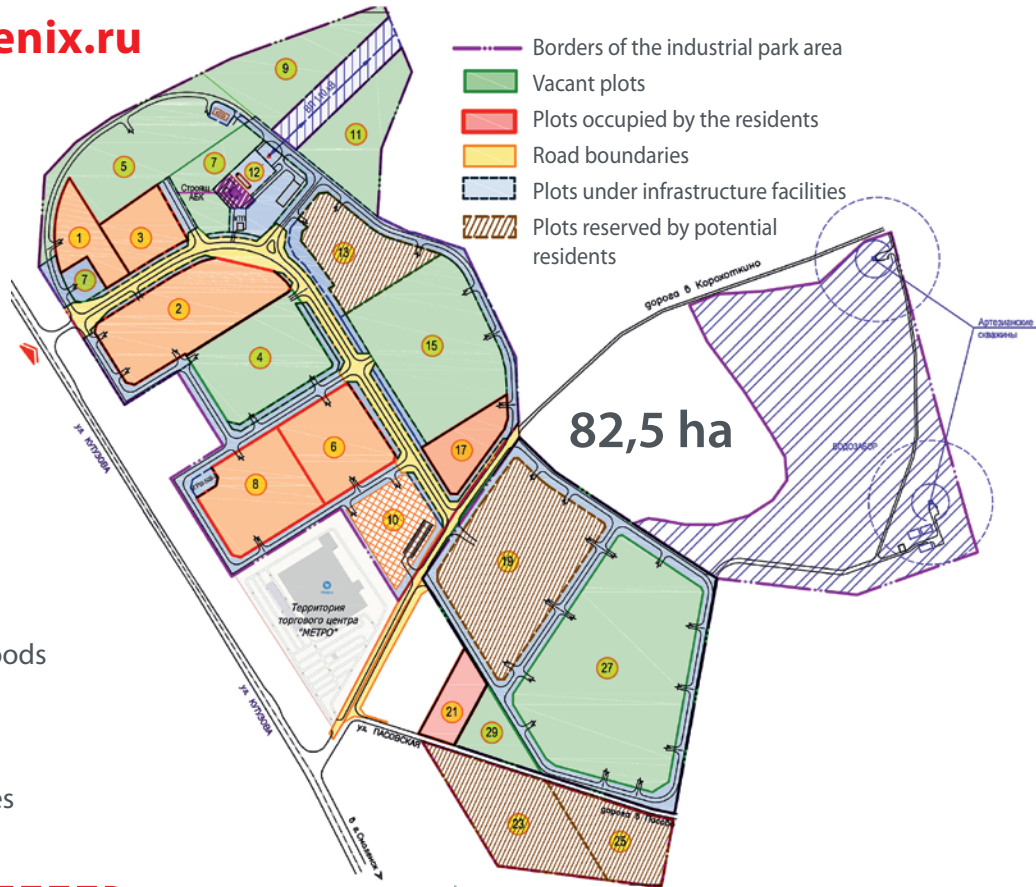


TAX CONDITIONS:

- ✓ LAND TAX
- ✓ PROPERTY TAX
- ✓ TRANSPORT TAX
- ✓ PROFITS TAX

0%

16.5%



- highly qualified specialists
- complex engineering infrastructure
- free technical connection to an electric grid of high voltage
- free using of land during construction

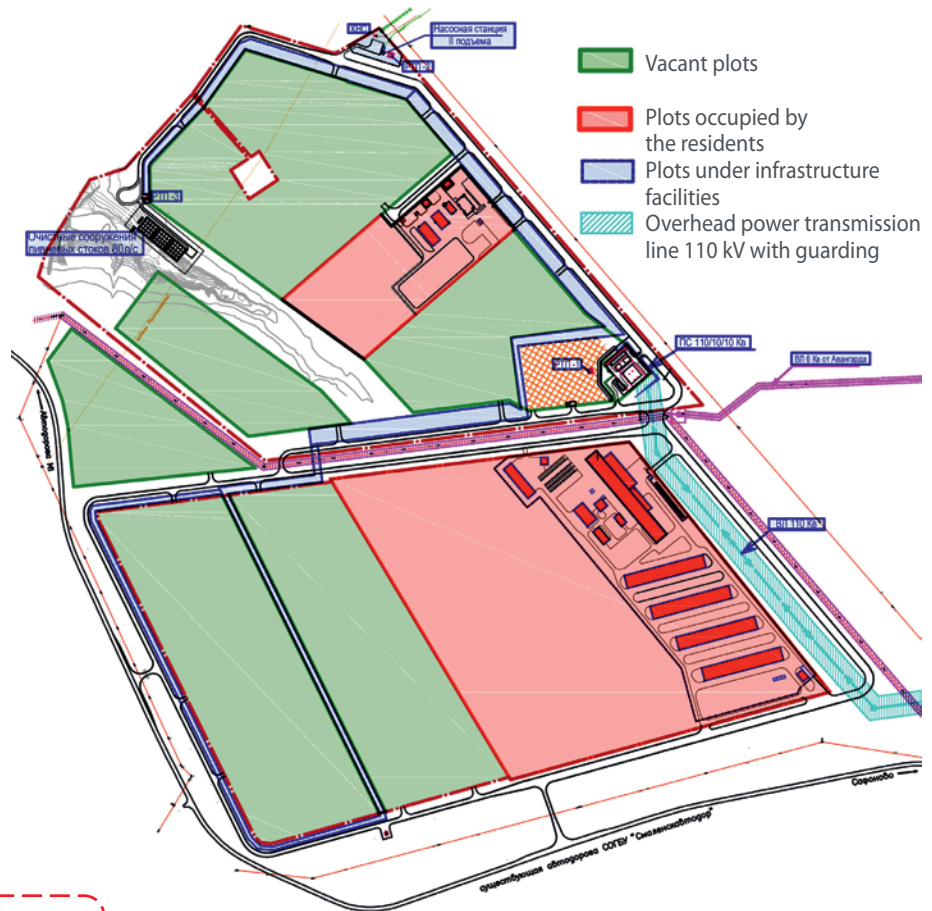
Specialization

Modern production facilities
(2-5th hazard class):

- flax processing
- metal processing
- instrumentation engineering
- production of metal and plastic goods
- other productions

30 ha – Russian Linen Ltd., launch of the first flax mill in Russia over the past 30 years

6 ha – a resident



TAX CONDITIONS:

- ✓ LAND TAX
- ✓ PROPERTY TAX
- ✓ TRANSPORT TAX
- ✓ PROFITS TAX

0%
16.5%



STABNA

Special Economic Zone

www.stabna.ru

Tax Incentives and Cost Benefits

- Accelerated depreciation rate equal to 2
- Accelerated deduction of R&D expenditure
- Federal and regional tax privileges
- Regional and federal subsidies, including support of exports

FREE CUSTOMS MODE

Duty-free import of equipment, raw materials and supplies into the SEZ territory



TAX CONDITIONS:



LAND TAX

(5 years from the month of emergence of title to each land plot)



PROPERTY TAX

(10 years from the month following the month of property registration)



TRANSPORT TAX

(10 years from vehicle registration)

0%

PROFITS TAX



During the first 7 years

2%



During the next 3 years

7%



Until 2069

15.5%

Special Administrative Regime

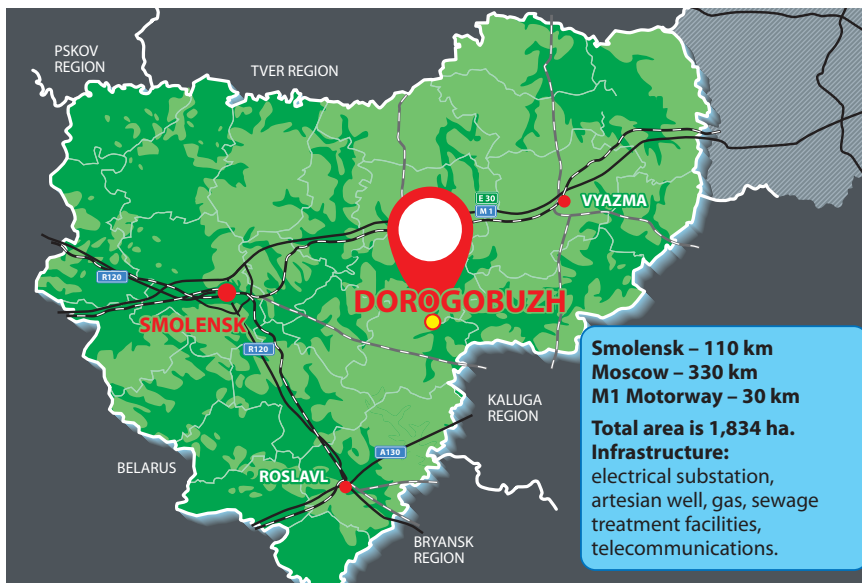
- One stop-shop approach
- Right of land redemption
- Stable investment environment guaranteed



Infrastructure

- ⚡ Electricity supply: 25 MW (reduced high voltage tariff)
- 🔥 Gas supply: 6,000 m3 per hour
- 💧 Water supply: unlimited

Priority Social and Economic Development Area (PSEDA) of Dorogobuzh



New jobs

> 20 employees



Exemption period

10 years



Investment during the first two years

> 2,5 mln roubles



PROVISION OF A LAND PLOT WITHOUT BIDDING



TAX BENEFITS FOR THE PSEDA RESIDENTS:



CORPORATE INCOME TAX



CORPORATE PROPERTY TAX



LAND TAX

0%

Location: Dorogobuzh

PSEDA advantages:

- the first PSEDA in the Central Federal District
- Special offers for residents of PSEDA

Dorogobuzh:

1) concessional loans:

- at an annual rate of 0% in the amount ranging from 5 to 250 mln roubles;
- at an annual rate of 5% in the amount ranging from 250 to 1,000 mln roubles;
- Loan maturity – up to 15 years;
- Respite from loan repayment.

2) construction of infrastructure facilities covered by budget investments.

Localization of modern production facilities:

- food products, non-alcohol drinks
- textile goods, clothing, leather and goods made of leather
- woodworking and production of goods made of wood and cork
- printed products
- chemical substances and chemical products (except for production of fertilizers and nitrogen compounds)
- pharmaceutical products and materials for medical use
- rubber and plastic goods
- other non-metal mineral products
- finished metal goods, except for cars and equipment
- furniture as well as other finished goods
- paper and paper products
- computers, electronic and optical products
- electric equipment
- motor vehicles, trailers and semitrailers
- other vehicles and equipment
- other finished products.

Localization of modern enterprises in the service sector:

- healthcare system
- sport, recreation and entertainment
- laundry and dry-cleaning
- hotel business
- warehousing and auxiliary transport activities
- activities for the provision of food and beverages
- activity of travel agencies or other organization providing services in the field of tourism

Localization of modern enterprises in the agricultural sector

Main Development Directions



LOGISTICS SERVICES



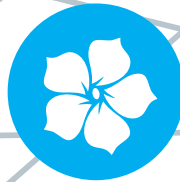
CHEMICAL INDUSTRY
PRODUCTION OF RUBBER
AND PLASTIC GOODS



DAIRY FARMING
AND MILK PROCESSING



INFORMATION TECHNOLOGIES



FLAX CULTIVATION
AND PROCESSING



WOODWORKING



GLASSHOUSE HORTICULTURE



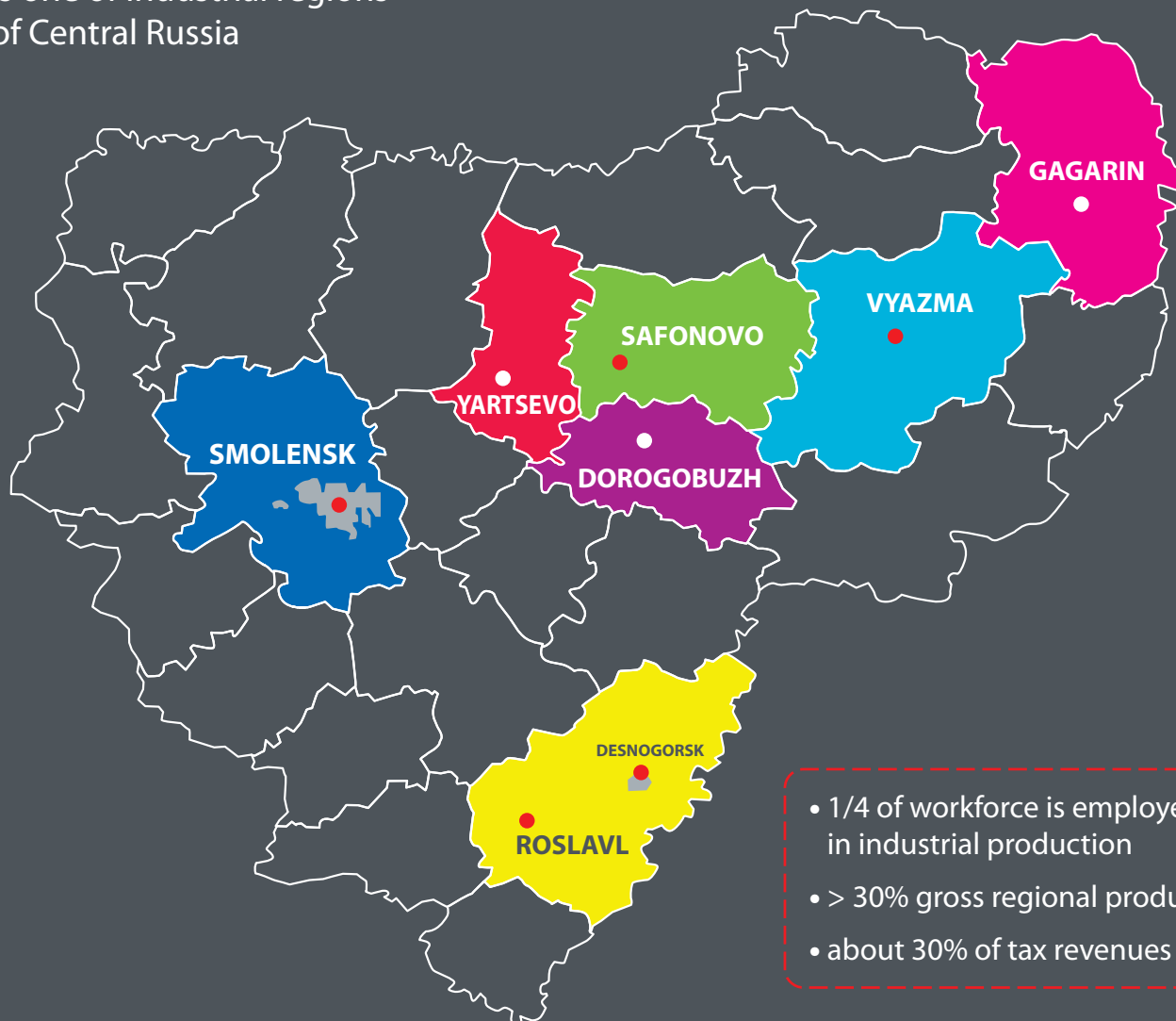
POWER ENGINEERING



TOURISM

Industry

The Smolensk Region
is one of industrial regions
of Central Russia

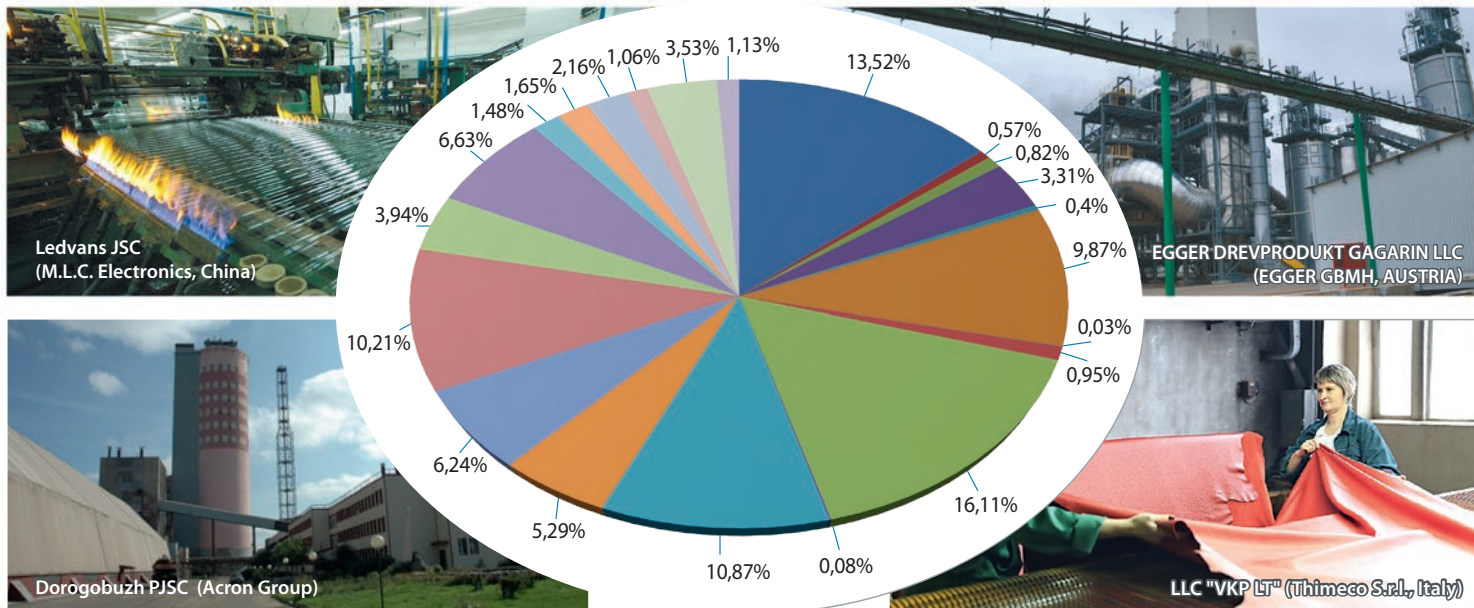


- 1/4 of workforce is employed in industrial production
- > 30% gross regional product
- about 30% of tax revenues



Industrial centres totally manufacturing over 90% of the overall amount of industrial goods produced within the region

Structure of the Industrial Production



- Food production
- Beverage production
- Production of textiles
- Production of garments
- Leather and leather goods production
- Wood working and manufacture of products from wood and cork, except for furniture items, as well as production of goods from straw and wicker
- Paper and paper goods production
- Printing and data storage media copying
- Production of chemical goods and substances
- Production of medicinal products and materials applied in medicine
- Production of rubber and plastic goods
- Production of other non-metallic mineral products
- Metallurgical production
- Production of ready-made metal products except for machines and devices
- Manufacture of computers, electronic and optical products
- Electrical equipment manufacturing
- Production of machines and devices, not included into other classifications
- Manufacture of motor vehicles, trailers and semi-trailers
- Manufacture of other vehicles and transport equipment
- Furniture manufacturing
- Production of other finished goods
- Repair and mounting of machines and devices

THE SMOLENSK REGION HAS A HIGH POTENTIAL FOR AGRO-INDUSTRIAL COMPLEX DEVELOPMENT

1. Land for agricultural usage:

- 1.7 mln ha of agricultural land
- including 0.4 mln ha of cultivated area

IN 2020

2. Plant growing

Gross yield of agricultural crops:

- grain – 301.9 thousand tons
- flax – 1.9 thousand tons
- rape – 13.9 thousand tons
- potato – 103.6 thousand tons
- vegetables – 31 thousand tons

3. Animal husbandry

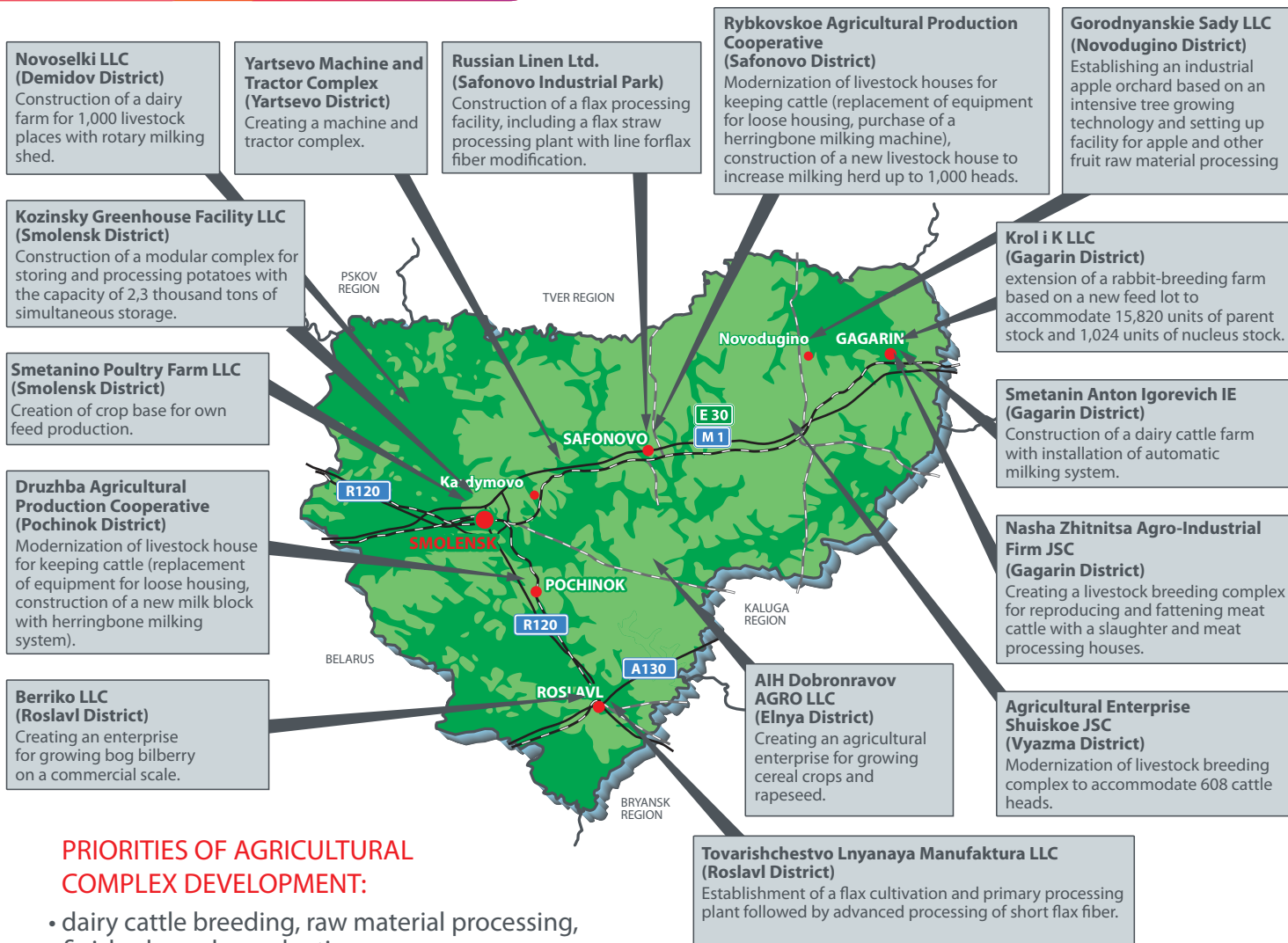
Gross output:

- milk – 160 thousand tons
- livestock and poultry for slaughter (live weight basis) – 86 thousand tons
- eggs – 287 mln

4. Social development of rural areas:

- constructed (purchased) housing – 0.7 thousand m²
- constructed gas supply networks – 44.1 km
- constructed water supply networks – 7.7 km
- 96 socially important projects with citizen participation implemented





PRIORITIES OF AGRICULTURAL COMPLEX DEVELOPMENT:

- dairy cattle breeding, raw material processing, finished goods production
- beef cattle breeding
- vegetable farming, including protected vegetable growing
- flax cultivation, primary processing and advanced refinement, linen goods production
- rape growing and processing
- cultivating and processing grain and grain legume crops into cereals (buckwheat, pea, wheat)

- 2.2 mln ha of land applicable for agricultural usage, including 1.7 mln ha of agricultural land
- 208 agricultural organizations
- 332 farming enterprises and individual entrepreneurs
- 118 thousand people having private farm households

State Support for Agribusiness

SUBSIDIES

PLANT GROWING

1. Subsidies on partial reimbursement of costs for purchasing elite seeds.
2. Subsidies on partial reimbursement of costs for a complex of agrotechnological works.
3. Subsidies on partial reimbursement of costs for carrying out land clearing operations and adding ameliorants to reduce soil acidity of reclaimed territories involved in agriculture.
4. Subsidies on partial reimbursement of costs for perennial plantations establishing and maintenance.
5. Subsidies on partial reimbursement of costs for ensuring increase in agricultural goods of own production in the framework of priority subindustries in agro-industrial complex:
 - production of cereal crops and/or grain legume crops;
 - production of field vegetables;
 - production of linum usitatissimum and/or industrial hemp.
6. Subsidies on partial reimbursement of costs for stimulating an increase in the production of oilseeds.

RURAL DEVELOPMENT

1. Social transfers on housing construction (purchase) for people living in rural areas, including young families and recent graduates.
2. Subsidies given to budgetary municipal districts of the Smolensk Region for housing construction on residential lease agreement.
3. Subsidies on the development of engineering infrastructure facilities...
4. Subsidies on carrying out activities for improvement of rural areas.
5. Subsidies on implementation of projects for integrated rural development.

ANIMAL HUSBANDRY

1. Subsidies on support of pedigree livestock farming.
2. Subsidies on increasing productivity of dairy cattle farming.
3. Subsidies on partial reimbursement of expenses related to keeping commercial dairy herd.
4. Subsidies on partial reimbursement of costs for maintaining high yielding dairy cow population.
5. Subsidies on development of beef husbandry.
6. Subsidies on partial reimbursement of costs for commercialization of fish.
7. Subsidies on acquisition of young breeder.
8. Subsidies given to organizations, sole proprietors on purchasing raw milk in the Smolensk Region for producing dairy products.
9. Subsidies given to agricultural consumer cooperatives on partial reimbursement of costs for acquisition of raw milk to further processing and sale.
10. Subsidies on partial reimbursement of costs for ensuring increase in agricultural goods of own production in the framework of priority subindustry in agroindustrial complex – development of beef farming.

DEVELOPMENT OF SMALL-SCALE FARMERS

1. Grants for development of family farms based on peasant farms, including sole proprietors.
2. AgroStartUp grants given to peasant farms or sole proprietors for their establishment and development.
3. Grants given to agricultural consumer cooperatives for improving the supply of materials and machinery.
4. Subsidies given to agricultural consumer cooperatives on partial reimbursement of costs related to their development.

REIMBURSEMENT FOR LOAN INTEREST RATES

1. Subsidies on partial reimbursement of costs for paying interest on investment loans.

AGRICULTURAL INSURANCE

1. Subsidies on partial reimbursement of costs for paying insurance premiums, charged under the agricultural insurance contracts, covering crop, and/or livestock, and/or commercial aquaculture insurance.

AGRO-INDUSTRIAL COMPLEX MODERNIZATION AND AGRICULTURAL MACHINERY PURCHASING

1. Subsidies on partial reimbursement of costs for purchasing agricultural machinery used to produce agricultural goods.
2. Subsidies on partial reimbursement of costs for purchasing agricultural equipment in order to create and/or modernize dairy production.
3. Subsidies on partial reimbursement of costs related to development of design specifications and estimates to create and/or modernize commercial dairy farms, and to carry out geotechnical investigation.
4. Subsidies on partial reimbursement of costs for lease payment.

BUILDING AGRICULTURAL FACILITIES (CAPEX)

1. Subsidies on partial reimbursement of direct costs incurred for building and/or upgrading agricultural facilities.

Education

PRE-SCHOOL EDUCATION



373 organizations
42 thousand people

SCHOOL EDUCATION



375 organizations
88.3 thousand people

133 organizations
56.9 thousand people



Vocational education:
33 organizations
97 training programs



Higher education:
19 organizations
68 training programs



FURTHER EDUCATION

PROFESSIONAL EDUCATION

REGIONAL STATE FUNDED HEALTHCARE FACILITIES



The major healthcare facilities:

- Smolensk Regional Clinical Hospital, Regional State Funded Healthcare Facility (hereinafter RSFHF)
- Smolensk Regional Children's Clinical Hospital RSFHF
- Smolensk Regional Clinical Hospital for War Veterans RSFHF
- Clinical Hospital for Emergency Care RSFHF
- Perinatal Centre RSFHF
- Smolensk Centre for AIDS Prevention and Treatment RSFHF
- Smolensk Blood Centre RSFHF
- Smolensk Regional Institute for Pathology RSFHF
- Research Institute for Antimicrobial Chemotherapy at the Smolensk State Medical University of the Ministry of Healthcare of the Russian Federation
- Federal Research Centre for Resistance Monitoring



FEDERAL CENTRE FOR TRAUMATOLOGY, ORTHOPEDICS AND PROSPHETICS, FEDERAL STATE FUNDED INSTITUTION OF THE MINISTRY OF HEALTHCARE OF THE RUSSIAN FEDERATION (SMOLENSK)



THE SMOLENSK REGION BOASTS HUGE CULTURAL POTENTIAL

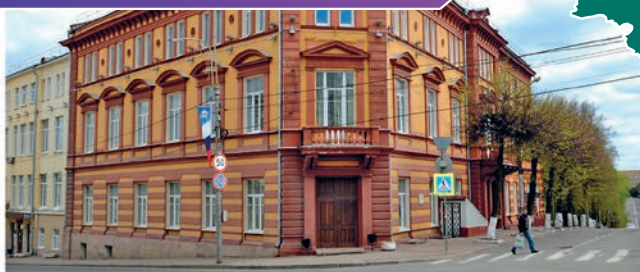


Smolensk State Drama Theatre named after A.S. Griboyedov



Smolensk Regional Philharmonic

Smolensk Regional Public Library named after A.T. Tvardovsky is acknowledged as one of the best regional libraries in Russia



Cultural and Exhibition Centre named after the Tenishevs



492
LIBRARIES



460
CULTURAL
AND LEISURE
FACILITIES



31
MUSEUMS



2
PARKS



3
THEATRES



1
CULTURE
AND EXHIBITION
CENTRE



1
PHILHARMONIA

THE SMOLENSK REGION ENJOYS A DEVELOPED NETWORK OF RECREATIONAL AND SPORTS FACILITIES

2,458 sports facilities can accommodate over 60 thousand people simultaneously:

24 
STADIUMS

5 
ICE PALACES

57 
SWIMMING POOLS

24 
SKIING COMPLEXES



FIELD OF PHYSICAL CULTURE AND SPORT EMBRACES:

- Smolensk State Academy of Physical Culture, Sport and Tourism
- Smolensk State School of Olympic Reserve
- Training Centre for Smolensk Region Sports Teams
- Centre for Adapted Physical Culture and Sport in the Smolensk Region
- 10 specialized sports schools of the Olympic reserve for children, 30 sports schools for children and 29 sports clubs

The Smolensk Region annually holds special winter and summer olympiads, regional competitions in track and fields, skiing and other sports for disabled children. Being members of regional teams, they also take part in Russian national and international competitions.

The Smolensk Ring motor-racing track (Verkhnedneprovsky urban settlement, Dorogobuzh District) meets all international standards of circuit races. The track is 3,357 m long and 12-15 m wide.
www.smolenskring.ru

Tourism Potential

88
tourist
agencies

31
museums

2,125
cultural
heritage
sites

703
archeological
heritage
sites

150
natural
sanctuaries

140
collective
accommodation

800
public
eating
facilities



Yuri Gagarin
(1934-1968) –
the first human
in space



Maria Tenisheva
(1858-1928) –
the founder of the Museum
of Russian Antiquities
in Smolensk ("Russkaya
Starina" Museum)



Mikhail Glinka
(1804-1857) –
the founder
of the Russian
classical music

FOCUS AREAS:



Educational
tourism



Ecological
tourism



Gastronomy
tourism



Event tourism



Health tourism



Industrial
tourism

EDUCATIONAL TOURISM

EVENT TOURISM:

features fascinating
spectacular shows:



International Historical Reenactment
and Slavic Culture Festival at Gnezdovo
(Smolensk)



Festival of Military Historical
Reconstruction
"The Battle of Vyazma 1812"
(Vyazma District)



Celebration of the Baptism Day of Rus
at the source of the Dnieper
(Sychyovka District)



Interregional Cucumber Festival
(Demidov District)



Vyazma Gingerbread Festival
(Vyazma)

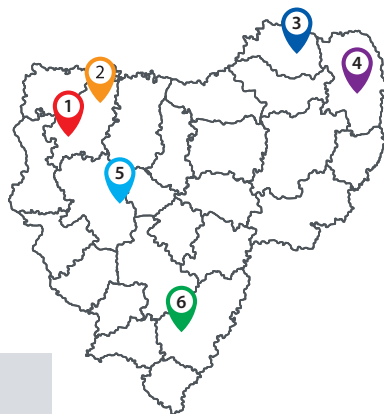


The Smolensk Region is annually included
into the Top 5 low-cost travel destinations
in Russia

Tourism potential

FONDATION FOR ECO-TOURISM IN THE SMOLENSK REGION

- 1 Demidov
- 2 Przhevalskoye
- 3 Sychyovka
- 4 Gagarin
- 5 Smolensk
- 6 Roslavl



**NATURE RESERVE OF REGIONAL IMPORTANCE
THE SOURCE OF THE DNIEPER RIVER**

- area of the wildlife sanctuary – 32 300 ha
- ecological path
- rare species of animals and plants listed in Red Book of the Russian Federation and the Smolensk Region
- watershed of three rivers' sources – the Dnieper, Volga and the Western Dvina

FONDATION FOR INDUSTRIAL TOURISM



Branch Office of Rosenergoatom Joint-Stock Company – Smolensk Nuclear Power Plant

One of the major electric power companies in Russia



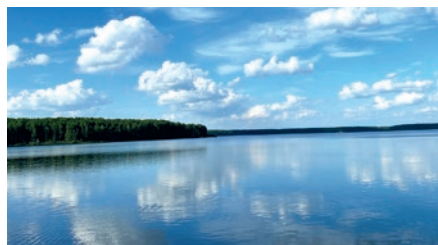
Smolensk Printing Plant

One of the most modern and largest printing enterprises in Russia



EGGER DREVPRODUCT GAGARIN LLC

The EGGER Group ranks among the world's leading wood-processing companies



DESNOGORSK RESERVOIR

- the largest nonfreezing reservoir with an area of 44 km² in the Smolensk Region
- it is situated in the Roslavl District and in the city of Desnogorsk, Smolensk Region
- multiple recreation facilities and camping spots
- unique species of fish and mollusks



**THE SMOLENSK LAKELAND NATIONAL PARK
("SMOLENSKOE POOZERYE")**

- 35 unique glacial lakes
- extensive network of hiking, water and cycling tourist routes and ecological paths
- dozens of camping and recreation sites
- recreational facilities and accommodation

GASTRONOMY TOURISM



- gastronomic guide "Smolensk cuisine"
- assistance in introducing dishes of Smolensk cuisine in the menu of eating establishments
- masterclasses on cooking local dishes
- gastronomic souvenirs
- www.smolkulinaria.ru

HEALTH TOURISM



- combining leisure with receiving highly qualified medical care
- project partners: multidisciplinary health clinics and regional tour operators
- www.medtoursmol.ru

What to Bring from Smolensk

SMOLENSK SWEETS

Smolensk sweets – favorite dainty of Empress Catherine II



VYAZMA GINGERBREAD

Beautiful reincarnation of an ancient Vyazma gingerbread from Vyazma baking complex



SMOLENSK FRUIT LEATHER

Sheeted fruit and berries paste – forgotten Old Russian dessert



TABLETOP GAME SMOLENSK FORTRESS WALL



SAPSHO CAKE

Unique regional souvenir from Prshevskoye settlement – the heart of the National Park “Smolenskoye Poozerye”



HAND MADE

Handicrafts from the best masters

Smolensk Region Has Already Been Chosen By



One of the world's leading providers in general lighting for professional lighting experts and consumers



The world's leading manufacturer of wood-based panels



One of the leading light manufacturers in Russia



World leader in treating people with chronic kidney failure



Russian investment company



Technoavia production and sale of workwear, footwear and personal protective equipment



ПРОМАГРО

АГРОПРОМЫШЛЕННЫЙ КОМПЛЕКС

One of the most progressive and fast-evolving companies in the Russian agro-industrial sector



Russia's leading meat-producer and supplier of high-quality pork, beef and premium food products



One of the largest manufacturers of meat products in Russia



Modern dynamic holding in the field of agriculture peat extraction and processing



Modern transport and logistics company

E EGGER

One of the leading international wood-based material manufacturers



The leading international player in wholesale trade



Russian clothing, footwear and accessories brand



One of Europe's largest DIY retailers



One of the largest Phalaenopsis producers in Europe



The leading Russian and global mineral fertiliser producer



Pipe Metallurgical Co., OJSC
One of the largest steel pipes manufacturers in Russia

INVEST IN THE REGION OFFERING NEW OPPORTUNITIES!

Governor of the Smolensk Region, Reception

tel. +7 (4812) 38-66-11, fax +7 (4812) 38-68-51
region@admin.smolensk.ru admin-smolensk.ru

Smolensk Region Administration Representative Under the Government of the Russian Federation

tel. +7 (495) 221-23-36, fax +7 (495) 221-23-34,
smolensk.pred@admin-smolensk.ru pred.admin-smolensk.ru/

Department of Investment Development of the Smolensk Region

tel. +7 (4812) 20-55-20, dep@smolinvest.com dep.smolinvest.com

Investment Development Corporation of the Smolensk Region

tel. +7 (4812) 20-55-20, smolregion67@yandex.ru corp.smolinvest.com

Smolensk Regional Fund for Entrepreneurship Support

tel. +7 (4812) 77-70-77, sofmpmp@yandex.ru sofmpmp.ru

Entrepreneurship Support Centre of the Smolensk Region

tel. +7 (4812) 638-038 (ext. 6), info@cpp67.ru cpp67.ru

Department of Industry and Trade of the Smolensk Region

tel. +7 (4812) 20-50-80, depromptorg@smolinvest.com dpt.admin-smolensk.ru

Department of Food and Agriculture of the Smolensk Region

tel./fax +7 (4812) 29-22-41, selhoz@admin-smolensk.ru selhoz.admin-smolensk.ru

Export Support Centre of the Smolensk Region

tel. +7 (4812) 67-20-90, info@export67.com export67.com

Investment Portal of the Smolensk Region

smolinvest.com

Switchboard for SME Support

[+7 \(4812\) 638-038](tel:+7(4812)638-038)



Smolensk